



Fundamentals of Arterial Duplex Imaging of the Extremities

In today's competitive and dynamic healthcare climate, it is critical to use your medical imaging systems to their fullest potential. Our goal at Philips Healthcare is to provide the clinical education you need to make the most of your equipment investment.

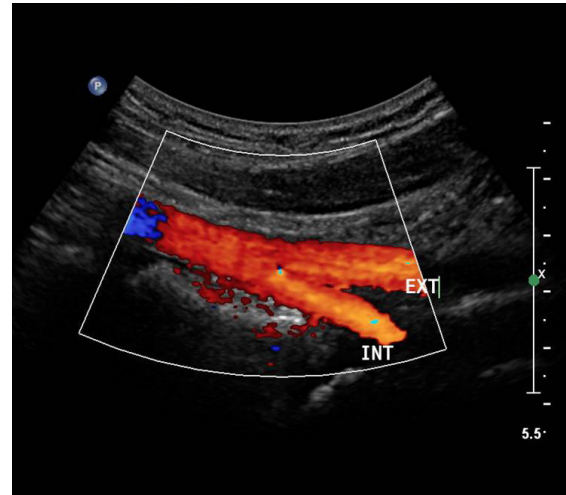
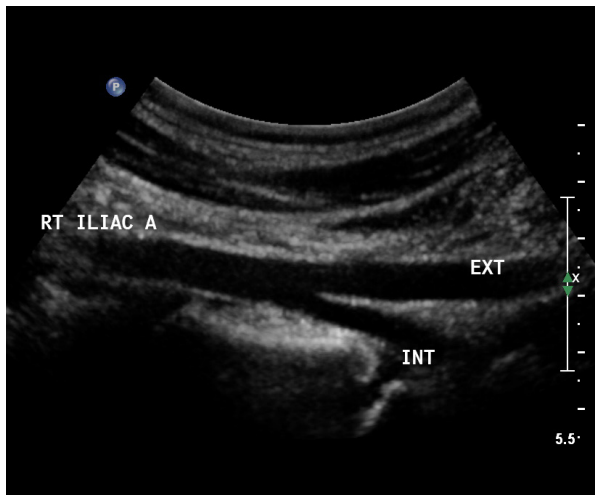
Philips ultrasound university Vascular 207

This one-day course is designed to help sonographers learn the basic skills necessary to begin scanning the major arteries of the arms, legs, and the distal abdominal aorta in the abdomen with ultrasound. This learning experience consists of lectures, demonstrations, and supervised hands-on sessions using live models. Lectures will explain arterial anatomy of the legs, arms, and the distal aorta. The course will also discuss how an arterial exam is performed, as well as, provide visual examples of arterial diseases. Attendees can practice imaging on the EPIQ Elite ultrasound system.

During the workshops, transducer choices, presets, and system settings will be explored giving attendees an opportunity to further understand how these affect image quality.

This course is designed for practicing sonographers who want to learn how to scan the arteries of the arms, legs, and the distal aorta.

Arterial Duplex Imaging of the Extremities (Vasc 207)



Course objectives.

Upon completion of this course, the learner should be able to:

- Discuss arterial anatomy of the upper and lower extremities
- Describe aortic bifurcation and Iliac arteries in the abdomen
- Explain indications for arterial imaging
- Identify abnormalities of the arterial system
- Review other non-invasive tests like segmental blood pressures and PVR
- Describe normal sonographic anatomy
- Distinguish sonographic windows
- Manipulate transducer choices and image optimization
- Discuss how to acquire images on models
- Explain how arterial duplex images are interpreted
- Review current therapies for severe Peripheral Arterial Disease
- Describe how duplex is used to evaluate post-operative patients

Prerequisite

Must be a practicing sonographer.

Faculty

Philips clinical education specialists

Locations

Course may be held in Philips central locations in Alpharetta, Georgia; Bothell, Washington; and Cleveland, Ohio. Other locations may be offered.



For more information

Contact a Philips ultrasound clinical services coordinator at 800-522-7022 and visit our education catalog at

www.learningconnection.philips.com/ultrasound