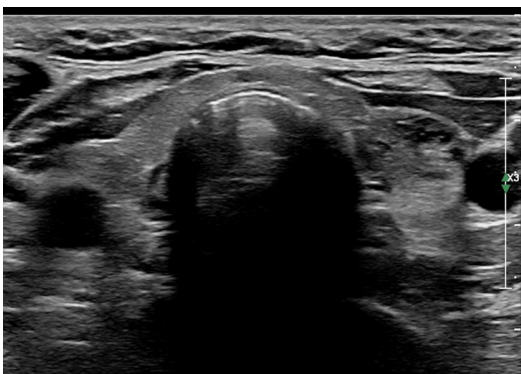




## Superficial Structures and Beyond

The decision to work with Philips is something we take very seriously. Our goal is to provide the education you need to make the most out of your investment.



### Philips Ultrasound University

#### General Imaging 319

This one day, physician-led course will provide the learner a comprehensive overview of the up-to-date sonographic imaging techniques, anatomy and physiology, common pathology, associated lab values and interpretation of the ultrasound exams performed on superficial organs including thyroid and parathyroid glands, scrotal ultrasound and “lumps and bumps”. Educational material will be presented in the form of detailed lectures.

This course will be presented by Dr. Sheila Sheth, Clinical Associate Professor of Radiology at NYU Langone. Her academic interests include image-guided biopsies, thyroid imaging, contrast Ultrasound and quality improvement.

## Superficial Structures and Beyond (GI319)



"High resolution ultrasound is usually the first and best imaging modality to evaluate superficial organs. Thyroid ultrasound is among the most common ultrasound examination performed in an outpatient setting. Sonographers and physicians should be familiar with new classification systems for thyroid nodules that have been proposed to standardize patient care. For men with acute scrotal pain or swelling, ultrasound is routinely utilized for diagnosis. Ultrasound helps the endocrine surgeon locate parathyroid to allow minimally invasive surgery and assist the surgeons and oncologists in differentiating malignant from benign lymph nodes. The aim of this course is to solidify the knowledge and skills that will enable you to consistently perform and interpret ultrasounds of a variety of superficial structures at the highest level. Emphasis will be placed on technique and lesser known or subtle findings."

Sheila Sheth, MD, FACR

### Objectives

Upon completion of this course, the learner should be able to:

- Discuss the role of ultrasound in diffuse thyroid disease and thyroid nodules including ATA and TIRADS guidelines for thyroid nodule evaluation
- Discuss ultrasound techniques to detect parathyroid adenomas
- Review and discuss the role of ultrasound in salivary glands and neck masses
- Review and discuss the ultrasound characterization of lymphadenopathy
- Discuss the role of ultrasound in scrotal pain, swelling and testicular masses
- Explain and discuss ultrasound evaluation of soft tissue masses and hernias

### Faculty

Sheila Sheth, MD, FACR

Philips Ultrasound Clinical Service Specialists

### Prerequisites

A thorough knowledge and understanding of 2D ultrasound imaging fundamentals and system instrumentation is required for this program.

### Audience Statement

This course is for physicians and sonographers interested in expanding their knowledge of ultrasound assessment and interpretation as it applies to superficial structures. Educational material will be presented in the form of detailed lectures and case presentations.



### For more information

Contact Philips ultrasound clinical education at 800-522-7022 and visit our education catalog at [www.learningconnection.philips.com/ultrasound](http://www.learningconnection.philips.com/ultrasound)

