



# HD15 PureWave Advanced Customer Training

Philips Ultrasound  
Advanced Customer  
Training 205 Series  
General Imaging

In today's competitive and dynamic healthcare climate, it is critical to use your medical imaging systems to their fullest potential. Our goal at Philips Healthcare is to provide the clinical education you need to make the most of your equipment investment.

#### Course description

Advanced Customer Training (ACT) courses are designed to educate customers on the leading-edge technologies specific to each system and application. Following your on site installation training, the intensive ACT serves to expand and deepen your knowledge.

This a one-day course of advanced and intensive training on the HD15 PureWave ultrasound system.

#### Prerequisite

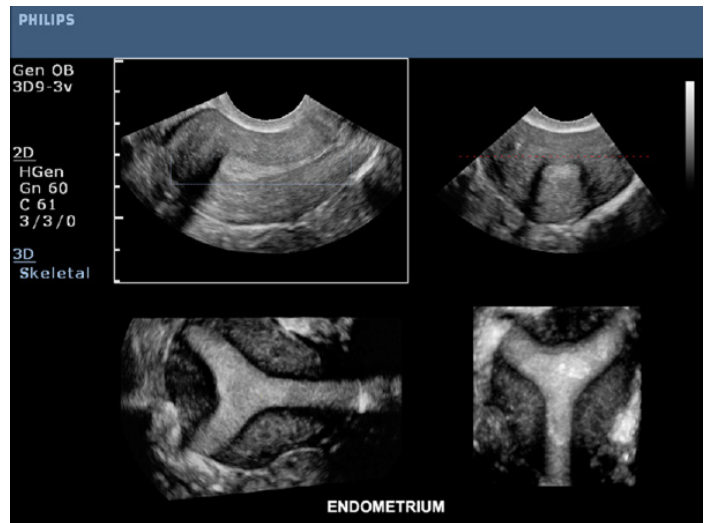
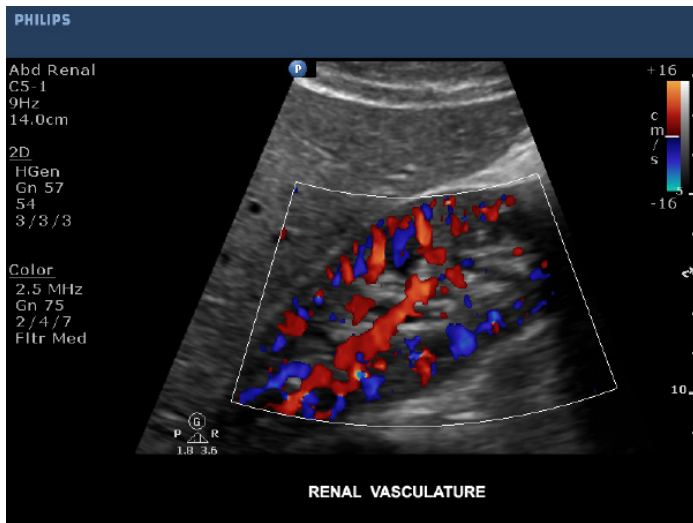
Attendees should have completed their on site installation training.

#### Locations

Will be held in Philips central locations in Alpharetta, Georgia; Bothell, Washington; and Cleveland, Ohio.

# PHILIPS

# HD15 Purewave Advanced Customer Training (HD205)



## Course objectives

Upon completion of the course, the attendee should be able to:

- Explain image optimization
- Discuss Freehand 3D
- Describe the basics of 3D/4D
- Understand 3D Color
- Explain MPR and GYN Volume Manipulation
- Discuss the basics of STIC in the evaluation of the fetal heart

## Faculty

Philips Ultrasound Clinical Education

## For more information

Contact Philips Ultrasound Clinical Education at 800.522.7022 and visit our education catalog at [www.learningconnection.philips.com/ultrasound](http://www.learningconnection.philips.com/ultrasound)

Please visit [www.learningconnection.philips.com/ultrasound](http://www.learningconnection.philips.com/ultrasound)



© 2014 Koninklijke Philips Electronics N.V.  
All rights are reserved.  
JUN 2014

Philips Healthcare reserves the right to make changes in specifications and/or to discontinue any product at any time without notice or obligation and will not be liable for any consequences resulting from the use of this publication.

Philips Healthcare is part of Royal Philips Electronics

[www.philips.com/healthcare](http://www.philips.com/healthcare)  
[healthcare@philips.com](mailto:healthcare@philips.com)

Philips Healthcare  
22100 Bothell Everett Highway  
Bothell, Washington 98021