

Comprehensive 3D Imaging and Interventions of the Mitral Valve

From Diagnosis to Intervention in Mitral Valve Disease

Philips Ultrasound
University
Cardiology 324

Live 3D TEE provides a novel imaging method to visualize the Mitral Valve. This modality aids clinicians in diagnosing disease of the mitral valve and guide interventions when necessary.

During this two-day course, participants will be introduced to 3D image acquisition for mitral valve disease. Non-invasive and invasive cardiologists, sonographers, cardiac anesthesiologists and cardiac surgeons will gain insight into clinical applications of this technique and a process to incorporate this technology into daily clinical practice. A broad spectrum of clinical applications of 3D TEE will be covered, including 3D assessment of the normal and abnormal mitral valve. There will focus on how to acquire and display 3D datasets of the mitral valve. There will be special emphasis on the use of Live 3D TEE for pre-procedural screening as well as the intra-procedural guidance during catheter- based interventions such as mitra-clip, trans-septal puncture, mitral

valvuloplasty, closure of prosthetic mitral paravalvular leaks. Challenging 3D-TEE cases of mitral valve endocarditis will also be discussed.

The first day of this two-day course will be taught by Dr. Raj Janardhanan. Educational material will be presented in the form of lectures, case presentations and informal discussions on Live 3D TEE and its clinical application. On the second day, the Philips ultrasound clinical education team will assist in instructing participants on analyzing, manipulating and cropping of 3D data sets using the QLAB software. Attendees will have ample opportunity to develop hands-on experience with QLAB.

PHILIPS

Comprehensive 3D Imaging and Interventions of the Mitral Valve (CV324)



Raj Janardhanan, MD, FACC, FASE

“The Mitral valve is a complex structure, which demands three-dimensional imaging. RT 3D-TEE is well suited to image the mitral valve comprehensively and provides insight into the exact mechanism of mitral valve disease. RT-3D TEE offers pre-procedural and intra-procedural guidance during complex mitral valve interventions”

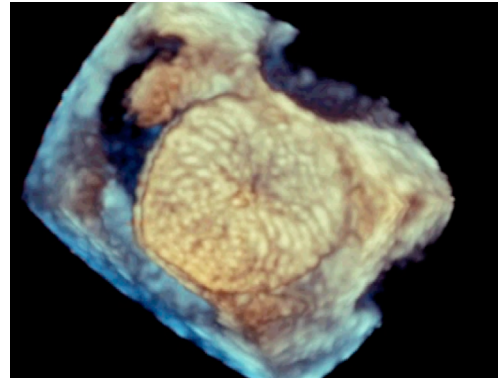
Learning outcomes

Upon successful completion of this program, attendees should be able to:

- Appreciate the incremental value of Live 3D TEE in evaluating normal mitral anatomy and defining pathology. Integrating 2D with 3D imaging
- Evaluate the mitral valve using various 3D modes. Display the “Surgeon’s View”
- Discuss mechanisms of mitral regurgitation
- Appreciate the use of Live 3D TEE for guidance during catheter- based interventions (such as mitral clips, mitral valvuloplasty, closure of prosthetic mitral paravalvular leaks)
- Discuss the advantages and limitations of Live 3D TEE in imaging the mitral valve
- Discuss integrating Live 3D TEE into everyday clinical practice

Facilitators and speakers

- Raj Janardhanan MD, MRCP, FACC, FASE is an Associate Professor of Medicine and Medical Imaging as well as the Medical Director, Non-Invasive Cardiac Imaging at South Campus of the University of Arizona. His expertise includes Live 3D TEE in structural heart disease and 3D TEE guidance during interventions.
- Philips Ultrasound Clinical Education Specialists



Prerequisites

A thorough knowledge and understanding of 2D TEE and basic system instrumentation is required for this program. This course does not offer hands-on system acquisition. Consider the ACT series for acquisition training.

Locations

Will be held in Philips central locations in Alpharetta, Georgia; Bothell, Washington and Cleveland, Ohio. Other locations may also be offered.

For more information

Contact Philips Ultrasound Clinical Education at 1 800-522-7022 and

visit our education catalog at www.learningconnection.philips.com/ultrasound

www.learningconnection.philips.com/ultrasound

Remote Access Available

This course has remote access opportunities available. Please speak to your Clinical Specialist for more information.

Please visit www.learningconnection.philips.com/ultrasound



© 2016 Koninklijke Philips N.V.
All rights are reserved.
Jan 2016

Philips Healthcare reserves the right to make changes in specifications and/or to discontinue any product at any time without notice or obligation and will not be liable for any consequences resulting from the use of this publication.

Philips Healthcare is part of Royal Philips

www.philips.com/healthcare
healthcare@philips.com
fax: +31 40 27 64 887

Philips Healthcare
22100 Bothell Everett Highway
Bothell, Washington 98021