

# The sonographer's systematic approach to the comprehensive echo exam

**Philips Ultrasound**  
Cardiology 308

This program follows the recommendations for performing a comprehensive echocardiogram as outlined in various scientific guidelines. The extensive suite of measurements offered to a sonographer can be overwhelming. The goal of this course is to explain what a complete exam can look like.

## Course description

The field of echocardiography is a rapidly changing one. Sonographers must keep up with the changes and technological advancements. Existing guidelines outline the steps that are needed to be taken in a modern complete echo. This course will review those steps and expand the sonographer's knowledge giving them an understanding of what the clinical impact of the echocardiographic measurements are on a patient's care. This course will be focused on the attendee with an interactive atmosphere that challenges the participant's level of knowledge. Educational material will be presented in the form of lectures and case presentations.

## Course objectives

Upon completion of the program, attendees should be able to:

- Recognize normal tomographic views for a complete exam
- Understand the important information seen in each view to make the diagnosis
- Understand what is needed to perform a high quality exam for accreditation
- Improve the interpretation skills to differentiate different disease states
- Demonstrate how to obtain specific views on and off axis to evaluate and quantify different disease states
- Discuss the guidelines for performing a complete exam

# PHILIPS

# The sonographer's systematical approach to the comprehensive echo exam (CV308)



"The ability to perform and understand a comprehensive echo is an essential skill necessary to help make the diagnosis needed to improve health care for their patients. This course will provide guidance on performing the exam in a thoughtful fashion and give the rationale behind the measurements."

RICHARD A. PALMA BS, ACS, RDCS, RCS, FASE, FSDMS

## Pre-requisite knowledge

A thorough knowledge and understanding of basic echocardiography is recommended for this program.

This course is intended for sonographer's.

## Location

Courses will be held at the various Philips training centers and other locations across the United States.

## Faculty

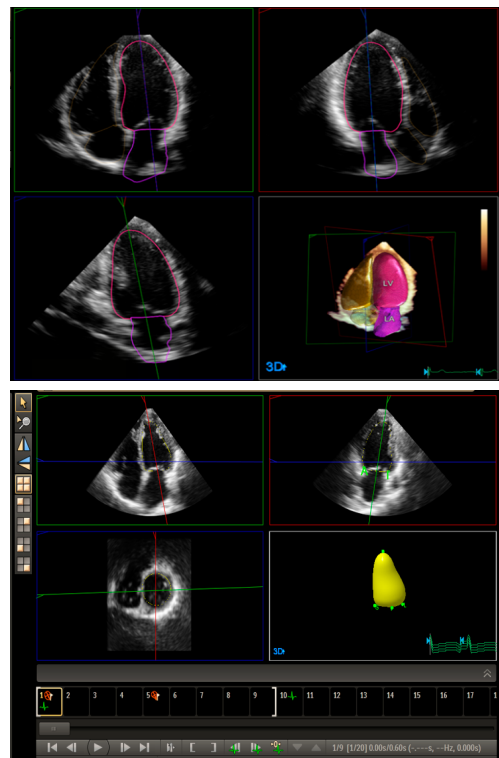
Richie Palma ACS  
Philips Ultrasound Clinical Education

## For More Information

Contact Philips Ultrasound Clinical Education at **800-522-7022** and visit our education portal: [www.philips.com/ultrasoundclinicaleducation](http://www.philips.com/ultrasoundclinicaleducation)

## Remote Access Available

This course has remote access opportunities available. Please speak to your Clinical Specialist for more information.



Please visit [www.philips.com/ultrasoundclinicaleducation](http://www.philips.com/ultrasoundclinicaleducation)



© 2018 Koninklijke Philips Electronics N.V.  
All rights are reserved.  
Feb 2018

Philips Healthcare reserves the right to make changes in specifications and/or to discontinue any product at any time without notice or obligation and will not be liable for any consequences resulting from the use of this publication.

Philips Healthcare is part of Royal Philips Electronics

[www.philips.com/healthcare@philips.com](http://www.philips.com/healthcare@philips.com)

Philips Healthcare  
22100 Bothell Everett Highway  
Bothell, Washington 98021