

Measuring Up to Standards: Chamber Quantification

Philips Ultrasound
Cardiology 101

This one-day program follows the recommendation for chamber quantification as outlined in various standards and guidelines. Examples of correct and incorrect measurements will be shown, describing what comprises a good quality measurement and why another is poor.

Course description

Advances in echocardiography have expanded the methods for assessing the cardiac chambers. Measuring simple two-dimensional distances are no longer sufficient. Volumes and multidimensional motion provide clinicians important data in the treatment of heart disease. This course will expand the sonographers knowledge and give them an understanding of what the clinical impact of these measurements can be. Educational material will be presented in the form of lectures and case presentations.

Course objectives

Upon completion of this program, attendees should be able to:

- Discuss basics of image optimization
- Describe standardized views and nomenclature
- Identify methods for quantification of the left ventricle size and function
- Identify methods for quantification of the right ventricle
- Explain atrial size and function
- Discuss methods for measurement of Left Ventricular diastolic function

PHILIPS

Measuring Up To Standards: Chamber Quantification (CV101)

Ultrasound is often the test of choice due to its cost effectiveness and portability. Improvements in imaging equipment allows sonographers to more accurately quantify the hearts shape, size and function.

Pre-requisite knowledge

A thorough knowledge and understanding of 2D echocardiography and system instrumentation is recommended for this program.

This course is intended for anyone who requires additional ultrasound knowledge.

Location

Course will be held at the various Philips training centers in Alpharetta, Georgia; Bothell, Washington; and Cleveland, Ohio. This program may also be offered in other regional locations.

Duration

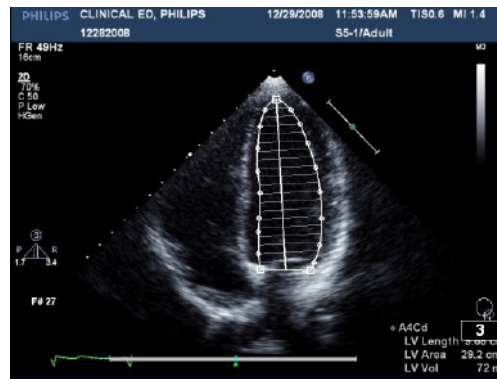
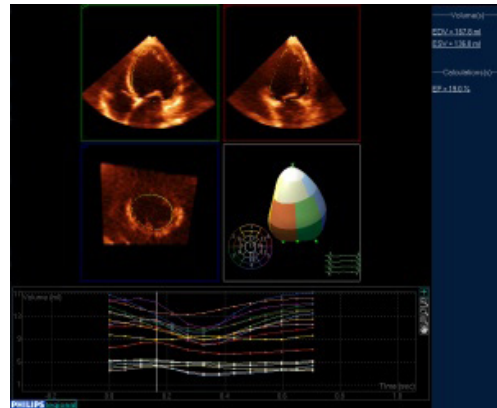
1 Day

Faculty

Philips Ultrasound Clinical Education

For More Information

Contact Philips Ultrasound Clinical Education at 800-522-7022 and visit our education catalog at www.learningconnection.philips.com/ultrasound



Please visit www.learningconnection.philips.com/ultrasound



© 2014 Koninklijke Philips Electronics N.V.
All rights are reserved.
JUN2014

Philips Healthcare reserves the right to make changes in specifications and/or to discontinue any product at any time without notice or obligation and will not be liable for any consequences resulting from the use of this publication.

Philips Healthcare is part of Royal Philips Electronics

www.philips.com/healthcare@philips.com

Philips Healthcare
22100 Bothell Everett Highway
Bothell, Washington 98021