



Practical Strain for the Echo Lab



The decision to work with Philips is something we take very seriously. Our goal is to provide the education you need to make the most out of your investment.

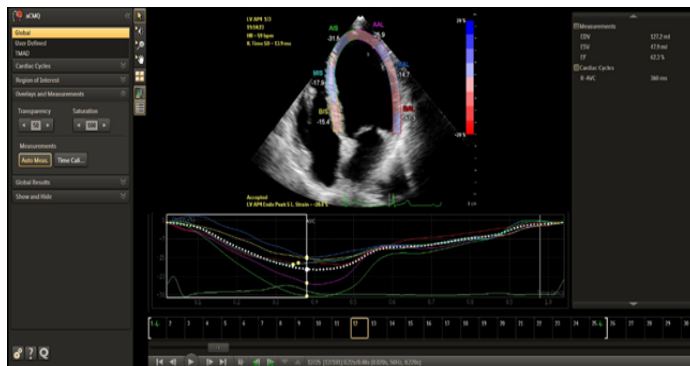
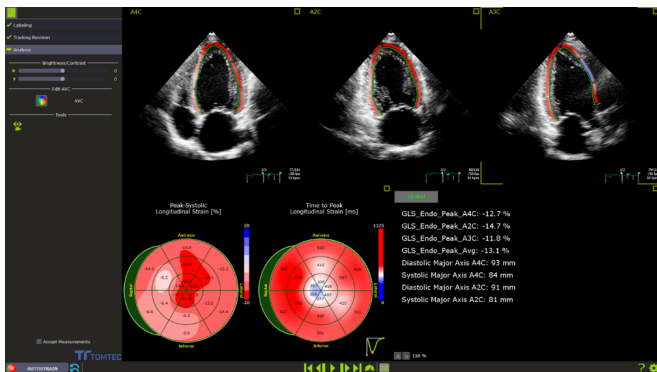
Practical Strain for the Echo Lab CV250

Global Longitudinal Strain (GLS) has been shown to be a reliable and reproducible measurement of left ventricular function. Studies have indicated GLS is useful in detecting subtle changes in function. This course will review the utility of GLS in daily echocardiography and provide attendees instruction on the tools and imaging techniques available on their Philips products.

This course is designed for Sonographers who wish to learn how to proficiently use the Philips strain analysis tools.

This one-day program provides a solid foundation in the principles and clinical applications for strain analysis on the EPIQ ultrasound system.

CV250 Practical Strain for the Echo Lab



Course objectives

Upon completion of this program, attendees should be able to:

- Describe how to optimize images on the EPIQ platform
- Explain Global Longitudinal Strain
- Use SmartExam to reduce keystrokes during studies for GLS
- Discuss aCMQ for additional information about strain, strain rate, rotation, and more
- Explain how to use AutoSTRAIN for fast reproducible GLS

Prerequisite

Attendees should have completed their onsite installation training.

Faculty

Philips Ultrasound Clinical Education.

Locations

May be held in Philips central locations in Alpharetta, Georgia; Bothell, Washington; and Cleveland, Ohio.



For more information

Contact Philips ultrasound clinical education at 800-522-7022 and visit our education catalog at www.learningconnection.philips.com/ultrasound

